

# ELECTRONICS MANUFACTURING SERVICES

WE PROVIDE MISSION-CRITICAL ELECTRONICS



**TERMA<sup>®</sup>**  
ALLIES IN INNOVATION



# Mission-Critical Electronics

Terma's Electronics Manufacturing Services has several years experience in advanced electronics manufacturing. Capabilities are available for developing mature process set up and manufacturing of complex electronics solutions for the defense industry.

For avionics, space, land, and naval applications, Terma has established special competences within manufacturing of reliable:

- High efficiency Power Supplies
- High Frequency products
- Signal Processing units

## Core Capabilities

Being a preferred partner by the air and space industry, the pedigree of Terma Electronics Manufacturing Services is built on development and manufacturing capabilities for extreme environments. Terma offers customers state-of-the-art facilities, and integrated test systems ensure deliveries with extremely high quality in order to achieve unparalleled mission-critical performance. In-house processes such as vacuum/autoclave bonding, parylene coating, vacuum soldering, extensive electrical testing, X-Ray and AOI inspection. Environmental stress screening is part of achieving a flexible and competitive manufacturing.

R&D capabilities include software development to support the manufacturing process in relation to handling technical issues. Terma undertakes the task to develop, manufacture, and maintain test systems.

## Quality and Calibration Certification

Terma is certified to:

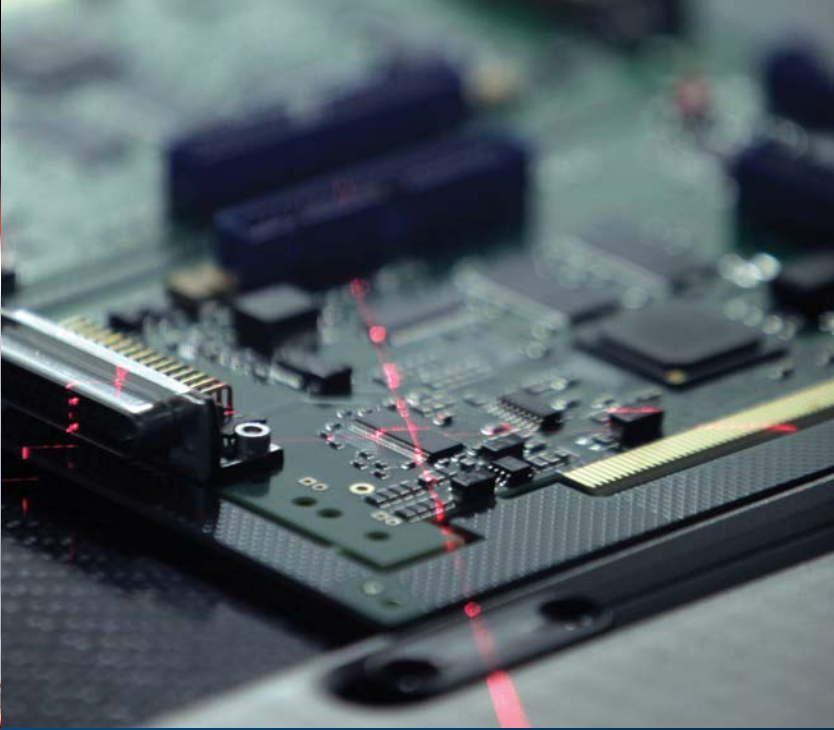
- ISO 9001:2015
- AS 9100C:2018
- NATO AQAP 2310

Terma maintains an in-house calibration laboratory. Our calibration services meet the requirements in ISO 10012:2003. Our calibration services establish direct measurement tractability to international standards.

## Environmental Testing

Terma has the capability of performing Environmental Stress Screening (ESS) at component level as well as assembly level:

- Temperature shock
- Vibration
- Temperature Exposure
- Burn-in



### **Professional Supply Chain Management**

Terma manages all aspects of supply chain management. We strive to realize low total costs of acquisitions while maintaining the highest possible quality and an uninterrupted flow of materials, products, and services.

Our high standard is achieved through an integrated effort of supply chain management disciplines.

These activities include preferred supplier initiatives with our supplier base, materials and production planning via our ERP system, engineering support, production improvements, subcontractor partnering, and competitive inventory management practices.

### **Industrial Cooperation**

Decades of involvement in international defense programs has contributed to a profound expertise in the field of management, production, and quality assurance.

Terma is able to support customers in handling industrial participation programs based on obligations generated through acquisitions for the Danish Government.





Operating in the aerospace, defense, and security sector, Terma supports customers and partners all over the world. With more than 1,600 committed employees globally, we develop and manufacture mission-critical products and solutions that meet rigorous customer requirements.

At Terma, we believe in the premise that creating customer value is not just about strong engineering and manufacturing skills. It is also about being able to apply these skills in the context of our customers' specific needs. Only through close collaboration and dialog can we deliver a level of partnership and integration unmatched in the industry.

Our business activities, products, and systems include: command and control systems; radar systems; self-protection systems for ships and aircraft; space technology; and advanced aerostructures for the aircraft industry.

Terma has decades of hands-on know-how in supporting and maintaining mission-critical systems in some of the world's most hostile areas. Terma Support & Services offers through-life support of all our products to maximize operational availability, enhance platform lifetime, and ensure the best possible cost of ownership.

Headquartered in Aarhus, Denmark, Terma has subsidiaries and operations across Europe, in the Middle East, in Asia Pacific as well as a wholly-owned U.S. subsidiary, Terma North America Inc., headquartered in Washington D.C. and with offices in Georgia and Texas.

© Terma A/S - 03/2021 Photo credits: Royal Danish Navy, Lockheed Martin Aeronautics, European Space Agency



[www.terma.com](http://www.terma.com)

**TERMA<sup>T</sup>**  
ALLIES IN INNOVATION